



LACQUER



GALLERY 149

in association with

RASTI CHINESE ART

The various items used by Japanese lacquersmiths in the process of making lacquerware are works of art in their own right, from the boards upon which the craftsmen worked to the bowls in which they mixed the lacquer or kept their tools. Lacquer is a sap from the *urushi* tree (*Rhus verniciflua*) and is a viscous oily liquid that drips during application. This oily liquid was mixed with colour oxides on tables or other flat surfaces and boxes and bowls were used to store the tools of the trade. These objects are inevitably coated with lacquer over time and become expressive objects d'art themselves, the lacquer drippings create mercurial designs reminiscent of abstract expressionist art. Certain pieces were then polished flat while others were left in their natural state with the multi-layers of thick lacquer built over the years. We hope you enjoy this exhibition and find beauty in these objects.

1 A lacquer smith circular palette with abstract design in brown, red, black, white and predominantly mustard colour tones

Japan: Showa period (1926–1989)
Diameter: 12 in (30.5 cm)



2

A large lacquered wood mixing bowl, *urushi bachi*, of shallow circular form with wide flattened rim, the interior covered in a thin red lacquer

Japan: Showa period (1926–1989)
Diameter: 25 in (63.5 cm)



3

A large lacquer mixing bowl, *urushi bachi*, of shallow circular form with wide flattened everted rim, the interior and exterior covered in thick deep black and faint red lacquer, the exterior covered in drips in the same tones

Japan: Showa period (1926–1989)

Diameter: 32 ¼ in (82 cm)



4

A lacquer smith toolbox, *dogu bako*, of rectangular form, covered in a predominantly black lacquer with drips of red, the cover with uneven thick layers formed with numerous drips

Japan: Showa period (1926–1989)

Length: 13 $\frac{3}{4}$ in (35 cm)

Width: 9 in (23 cm)

Height: 6 $\frac{1}{2}$ in (16.5 cm)



5

A lacquer smith work table, *hikidashi tsuki joban*, fitted with a two-directional drawer, the top with three sides with raised everted rims covered in a deep black lacquer, one corner with an irregular residue of built-up layers of lacquer, the sides with drips of red and black lacquer, the underside inscribed with *nantarra no uchi* ('the piece placed on top of several others') and dated April 1965

Japan: dated April 1965
Length: 16 ¾ in (42.5 cm)
Width: 11 ¼ in (28.5 cm)
Height: 4 ¼ in (10.8 cm)



6

A solid keyaki wood circular lacquering block, cut into ascending form, thicker on one side with a natural crack and hole to the top, covered in red and black lacquer drips

Japan: Showa period (1926–1989)

Diameter: 9 1/4 in (23.5 cm)



7

A lacquer smith work table, *hikidashi tsuki joban*, of rectangular form on four feet, fitted with three drawers, the sides with drips of red and black lacquer, the back section with thicker layers, the top polished down revealing brushstroke-like patterns

Japan: Showa period (1926–1989)

Length: 15 ¾ in (40 cm)

Width: 12 ¼ in (31 cm)

Height: 9 ¾ in (24.8 cm)



8

A lacquer smith work table, *hikidashi tsuki joban*, of rectangular form on four feet, fitted with four drawers, the sides and back with heavy drips of red and black lacquer, the top polished down to reveal brushstroke-like abstract patterns mostly in red tones, one drawer jammed through thickness of lacquer

Japan: Showa period (1926–1989)
Length of box: 15 1/2 in (39.5 cm)
Length with extended drawer: 24 in (61 cm)



9

A lacquer smith work table, *hikidashi tsuki joban*, of rectangular form on four feet, fitted with two drawers (two missing), the sides and back with heavily built-up drips of black and red lacquer, one side with an extended area of thick layers of lacquer, the top with one section polished down to reveal an abstract design

Japan: Showa period (1926–1989)

Length: 15 1/2 in (39.5 cm)



10

A lacquer smith work table, *hikidashi tsuki joban*, of rectangular form on four feet, fitted with four drawers, the sides and back with drips of predominantly red and black lacquer, the top polished down revealing brushstroke-like patterns, one drawer jammed through thickness of lacquer

Japan: Showa period (1926–1989)

Length of box: 15 1/2 in (39.5 cm)

Length with extended drawer: 22 1/2 in (57.1 cm)



11

A lacquer smith work table, *hikidashi tsuki joban*, of rectangular form, fitted to the top with a rectangular board, one side fitted with one drawer on a raised foot, covered in red and black lacquer with abstract designs, the edges with drips

Japan: Showa period (1926–1989)

Width: 23 $\frac{7}{8}$ in (60.6 cm)



12

A lacquer smith work table, made from a thick rectangular wooden slab, covered in shades of brown lacquer giving a marbelized abstract design, set on two rectangular feet

Japan: early 20th century
Width: 21 in (53.3 cm)



13

A lacquer smith circular panel, with heavily built up globules of thick red and black lacquer creating an abstract design

Japan: Showa period (1926–1989)
Diameter: 8 in (20.3 cm), wood stand



14

A lacquer smith tapering stand, of trapezoidal form, set on four short feet, the top fitted with a thick leather covering as the work surface, the whole surface of the top and sides covered with red and black lacquer, the hollow underside fitted with a rock to weigh down the stand for steadiness

Japan: Showa period (1926–1989)

Height: 10 ¼ in (26 cm)



15

A lacquer smith rectangular drying rack, fitted with two raised rails designed to support movable drying boards, the surface covered in thick layers of dripped black and red lacquer, predominantly in black

Japan: Showa period (1926–1989)

Length: 36 1/2 in (92.7 cm)



16

A lacquer smith rectangular panel, the abstract board with one half polished down predominantly in black with traces of red, the other half more mottled with higher residue of red lacquer, two areas to the edges with overhanging thick layers of dripping lacquer over the rims

Japan: the back inscribed and dated 'Showa 44th year, 9th month' (corresponding to September 1969)

Length: 16 1/4 in (41.3 cm)

Width: 11 3/4 in (30 cm)



17

A lacquer smith rectangular drying rack, fitted with two raised rails designed to support movable drying boards, the surface covered in thick layers of dripped black and red lacquer, predominantly in red

Japan: Showa period (1926–1989)

Length: 36 1/2 in (92.7 cm)



18

A large lacquer smith work table, *hikidashi tsuki joban*, of rectangular form, on a raised foot, the top in predominantly brown lacquer with smaller splashes of red, black and green tones mostly to the edges

Japan: Showa period (1926–1989)

Length: 42 in (106.7 cm)

Width: 27 in (68.5 cm)



19

A lacquer smith work table, *hikidashi tsuki joban*, of rectangular form, fitted to the top with a rectangular board, one side with an opening for a drawer (missing), on a raised foot, the top with layers of grey and black lacquer

Japan: Showa period (1926–1989)

Length: 28 ½ in (72.4 cm)



20

A lacquer smith rectangular drying rack on four raised legs, the top with heavily built up drips of black, red and gold lacquer and cup marks creating abstract designs

Japan: Showa period (1926–1989)
Length: 32 in (82.3 cm)



21

A lacquer smith work table, *hikidashi tsuki joban*, of rectangular form, on a raised foot, the top with very heavily built up layers of undulating black lacquer to one side, one area polished down creating a recessed well and surrounded by uneven drips, the edges also with raised thicker lacquer and small red drips, the reverse with two lines of calligraphy

Japan: Showa period (1926–1989), with inscription on the reverse referring the object as a gift to a house and dated 1975
Length: 37 in (94 cm)



22

A lacquer smith work table, *hikidashi tsuki joban*, of rectangular form, on a raised foot, the top with heavy drips of pale and deep red, as well as smaller areas of black lacquer, one large patch of the paler red tone, two corner edges with heavier built up raised areas of red and black

Japan: Showa period (1926–1989)

Length: 35 $\frac{3}{4}$ in (90.8 cm)



23

A lacquer smith work table, *hikidashi tsuki joban*, of rectangular form, on low feet, the top with areas of heavily built up drips and globules of deep red and black lacquer creating abstract designs

Japan: Showa period (1926–1989)

Length: 33 in (83.8 cm)



24

A lacquer smith work table, *hikidashi tsuki joban*, of rectangular form, on low feet, the top polished down in shades of black, brown and patch of cream lacquer, an area of the original wood uncovered, creating an abstract design reminiscent of a landscape

Japan: Showa period (1926–1989)

Length: 33 1/2 (85 cm)



25

A lacquer smith work table, *hikidashi tsuki joban*, of rectangular form, on low feet, the top with deep shades of red and black lacquer, one edge with heavily built up drips in black

Japan: Showa period (1926–1989)
Length: 33 1/2 in (85 cm)



26

A lacquer smith tool holder, of circular cylindrical form, covered in thick layers of dripping black and red lacquer

Japan: Showa period (1926–1989)

Height: 5 $\frac{5}{8}$ in (14.3 cm)

Diameter: 7 $\frac{1}{2}$ in (19 cm)



A group of various lacquer smith tools

27

Japan: Showa period (1926-1989)



28

A lacquer smith tapering trapezoidal stand, the narrower top section leading to a spreading foot with very heavily built up layers of red and black lacquer drips creating a sculpture in the round

Japan: Showa period (1926–1989)

Height: 10 1/2 in (26.7 cm)



29

A lacquer smith rectangular panel covered in a deep reddish-brown, red and black lacquer heavily built up and dripping on the edges, creating an abstract design

Japan: Showa period (1926–1989)
Length: 16 3/4 in 42.5 cm)



30

A lacquer smith rectangular two-sided panel, one side covered in predominantly red with smaller black areas, the reverse almost entirely in polished black lacquer, the edges with heavy drips of black and red

Japan: Showa period (1926–1989)
Length: 18 in (45.7 cm)



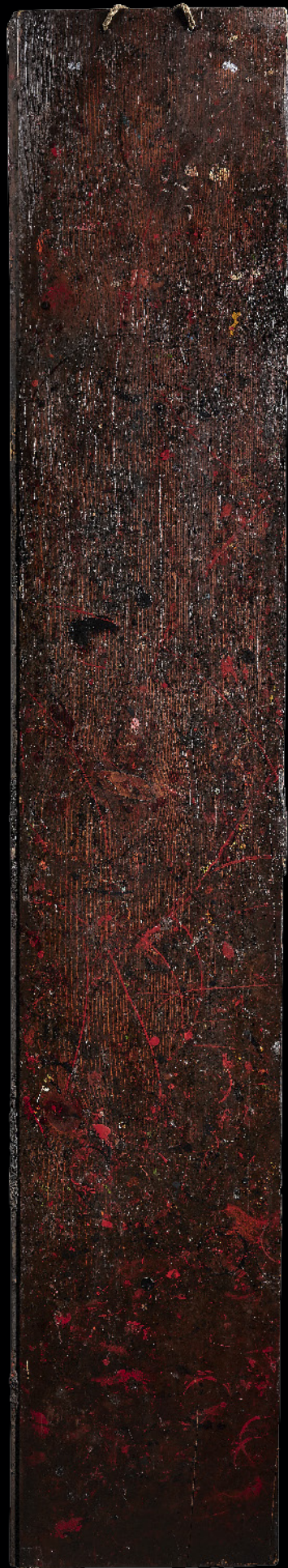
31

A long lacquer smith floorboard of rectangular form, covered in drips and splashes of predominantly red and black lacquer with smaller drips of green and yellow lacquer

Japan: Showa period (1926–1989)

Length: 73 1/2 in (186.7 cm)

Width: 13 in (33 cm)



32

Eight lacquer smith drying boards, *suita*, of rectangular form, each side with profuse cup marks in red and black lacquer

Japan: Showa period (1926–1989)
Length of longest: 35 $\frac{3}{4}$ in (90.8 cm)



view 1

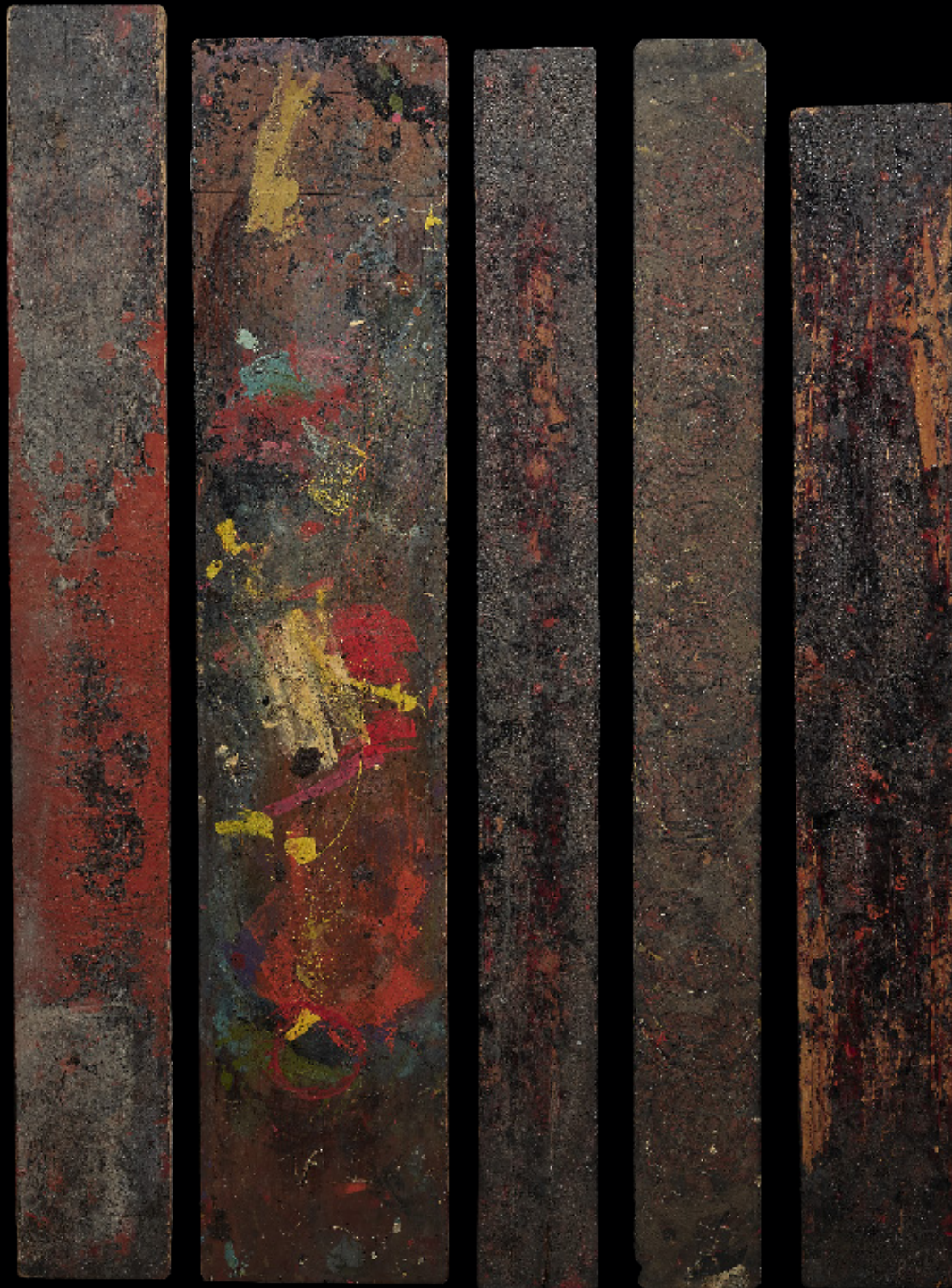


view 2

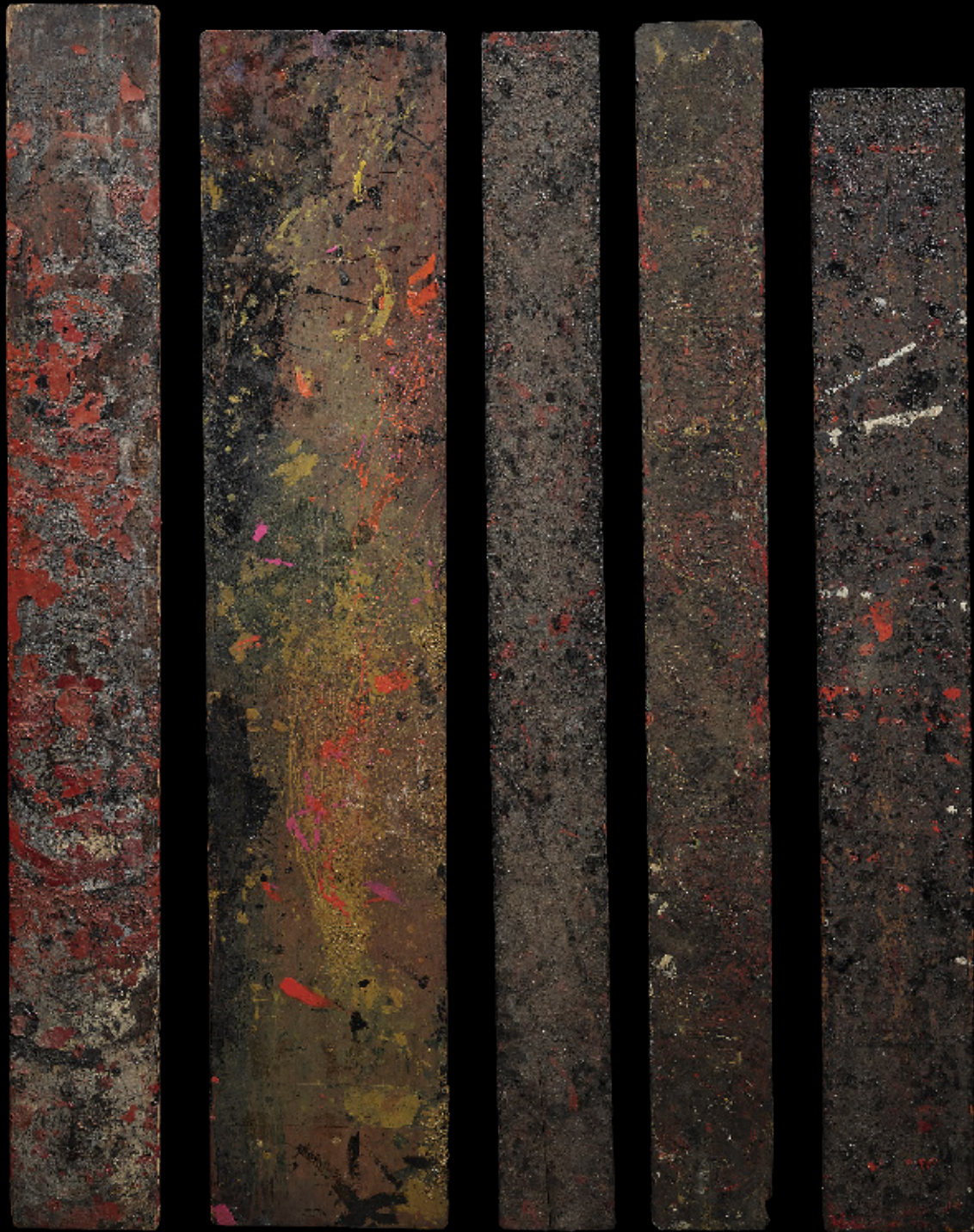
33

Five lacquer smith drying boards, *suita*, of rectangular form, each side with variously heavily built up drips of red, black, yellow, green and gold lacquer

Japan: Showa period (1926–1989)
Length of longest: 35 ³/₄ in (90.8 cm)



view 1



view 2

34

Five lacquer smith drying boards, *suita*, of rectangular form, each side with geometric designs and heavily built up cup marks in deep red and black lacquer

Japan: Showa period (1926–1989)
Length: 35 1/4 in (89.5 cm)




view 1



view 2

Photography by Mark French
Design by OM Publishing
Copyright © 2020 Rasti Chinese Art Ltd.
All rights reserved



Ruyi 149 Gallery
如壹
149 Hollywood Road, Central, Hong Kong
香港中環荷李活道149號
T: +852 2110 5928 E: info@ruiyi149.com
www.ruiyi149.com

Rasti Chinese Art Ltd.
瑞斯帝中國藝術
Lee Roy Commercial Building, 6th Floor,
57/59 Hollywood Road, Central, Hong Kong
香港中環荷李活道57-59號利來商業大廈6樓
T: +852 2415 1888 E: gallery@rastichineseart.com
www.rastichineseart.com